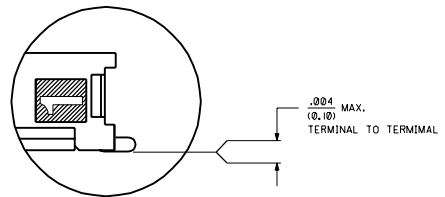


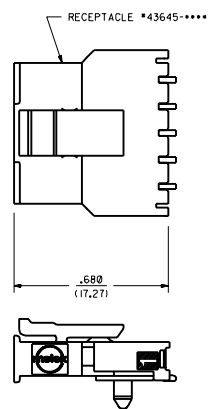


ASSEMBLY ITEM NUMBER	PART CHARACTERISTICS FOR RIGHT ANGLE	
	NUMBER OF POSITION	PLATING OPTION
43650-0206	02	A
43650-0207	02	B
43650-0208	02	C
43650-0306	03	A
43650-0307	03	B
43650-0308	03	C
43650-0406	04	A
43650-0407	04	B
43650-0408	04	C
43650-0506	05	A
43650-0507	05	B
43650-0508	05	C
43650-0606	06	A
43650-0607	06	B
43650-0608	06	C
43650-0706	07	A
43650-0707	07	B
43650-0708	07	C
43650-0806	08	A
43650-0807	08	B
43650-0808	08	C
43650-0906	09	A
43650-0907	09	B
43650-0908	09	C
43650-1006	10	A
43650-1007	10	B
43650-1008	10	C
43650-1106	11	A
43650-1107	11	B
43650-1108	11	C
43650-1206	12	A
43650-1207	12	B
43650-1208	12	C

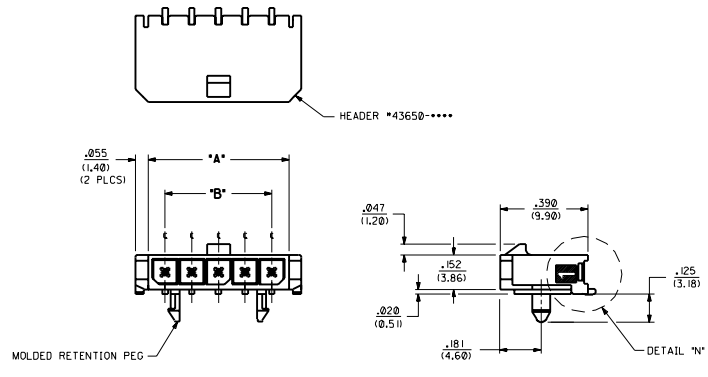
CKT. NO.	DIM. "A"	DIM. "B"	DIM. "C"
2	.270/(6.85)	.118/(3.00)	NA
3	.388/(9.85)	.236/(6.00)	NA
4	.506/(12.85)	.354/(9.00)	.185/(4.70)
5	.624/(15.85)	.472/(12.00)	.303/(7.70)
6	.742/(18.85)	.591/(15.00)	.421/(10.70)
7	.860/(21.85)	.709/(18.00)	.539/(13.70)
8	.978/(24.85)	.827/(21.00)	.657/(16.70)
9	1.096/(27.85)	.945/(24.00)	.776/(19.70)
10	1.215/(30.85)	1.063/(27.00)	.894/(22.70)
11	1.333/(33.85)	1.181/(30.00)	1.012/(25.70)
12	1.451/(36.85)	1.299/(33.00)	1.130/(28.70)



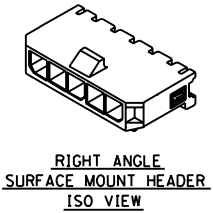
- NOTES:**
- HOUSING MATERIAL: 30% GLASS FILLED LIQUID CRYSTAL POLYMER (LCP), UL 94V-0, COLOR IS BLACK.
  - THIS HEADER MATES WITH MICRO-FIT RECEPTACLE \*43645-\*\*\*\*.
  - THIS HEADER IS DESIGNED IN METRIC.
  - SEE SHEETS 1 THRU 5 FOR RIGHT ANGLE ASSEMBLIES AND THEIR RESPECTIVE PART NUMBERS.
  - SEE SHEETS 6 THRU 10 FOR VERTICAL ASSEMBLIES AND THEIR RESPECTIVE PART NUMBERS.
  - TERMINAL PLATING:
    - 'A': .000100/(0.0025) BRIGHT TIN-LEAD (90/10) OVER .000030/(0.00076) NICKEL.
    - 'B': .000015/(0.00038) GOLD IN SELECTIVE AREA, AND .000050/(0.00127) TIN-LEAD (90/10) IN SELECTIVE AREA, BOTH OVER .000030/(0.00076) NICKEL.
    - 'C': .000030/(0.00076) GOLD IN SELECTIVE AREA, AND .000050/(0.00127) TIN-LEAD (90/10) IN SELECTIVE AREA, BOTH OVER .000030/(0.00076) NICKEL.
  - DESIGNED FOR .062/(1.57) P.C. BOARD.
  - ALL CONNECTORS MUST MEET THE PERFORMANCE REQUIREMENTS OF MOLEX PRODUCT SPECIFICATION \*PS-43650.
  - TRAY PACKAGING SPECIFICATIONS ARE SHOWN ON DRAWING\* PK-70873-032L.



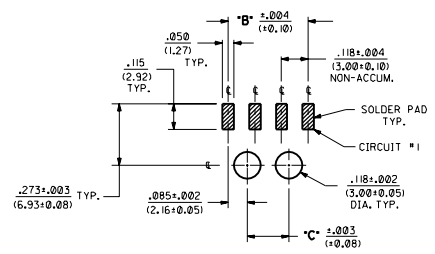
MATED MICRO-FIT CONNECTOR



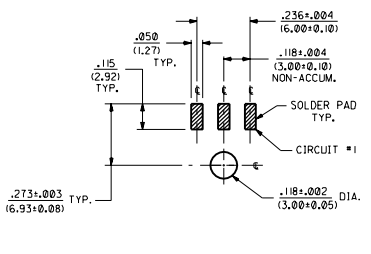
RIGHT ANGLE SURFACE MOUNT (WITH MOLDED RETENTION PEG)



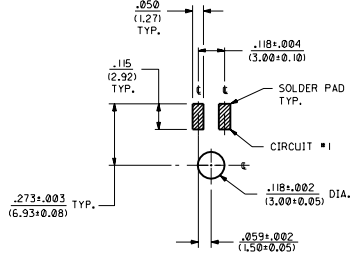
RIGHT ANGLE SURFACE MOUNT HEADER ISO VIEW



RECOMMENDED P.C. BOARD LAYOUT FOR 4 THRU 12 CIRCUIT HEADER



RECOMMENDED P.C. BOARD LAYOUT FOR 3 CIRCUIT HEADER



RECOMMENDED P.C. BOARD LAYOUT FOR 2 CIRCUIT HEADER

REVISIONS	REV. 1	DATE	05/11/21
DESCRIPTION	MICRO-FIT (3.0) 2 THRU 12 CIRCUIT IN-LINE HEADER ASSY.		
DATE	05/11/21	SCALE	4:1
BY	AFG	CHECKED	BAP
APP'D	R.F.	SCALE	4:1
SEE CHART SDA-43650-****			
MOLDED RETENTION PEG IS NOT TO BE USED UNLESS SPECIFIED OTHERWISE.			